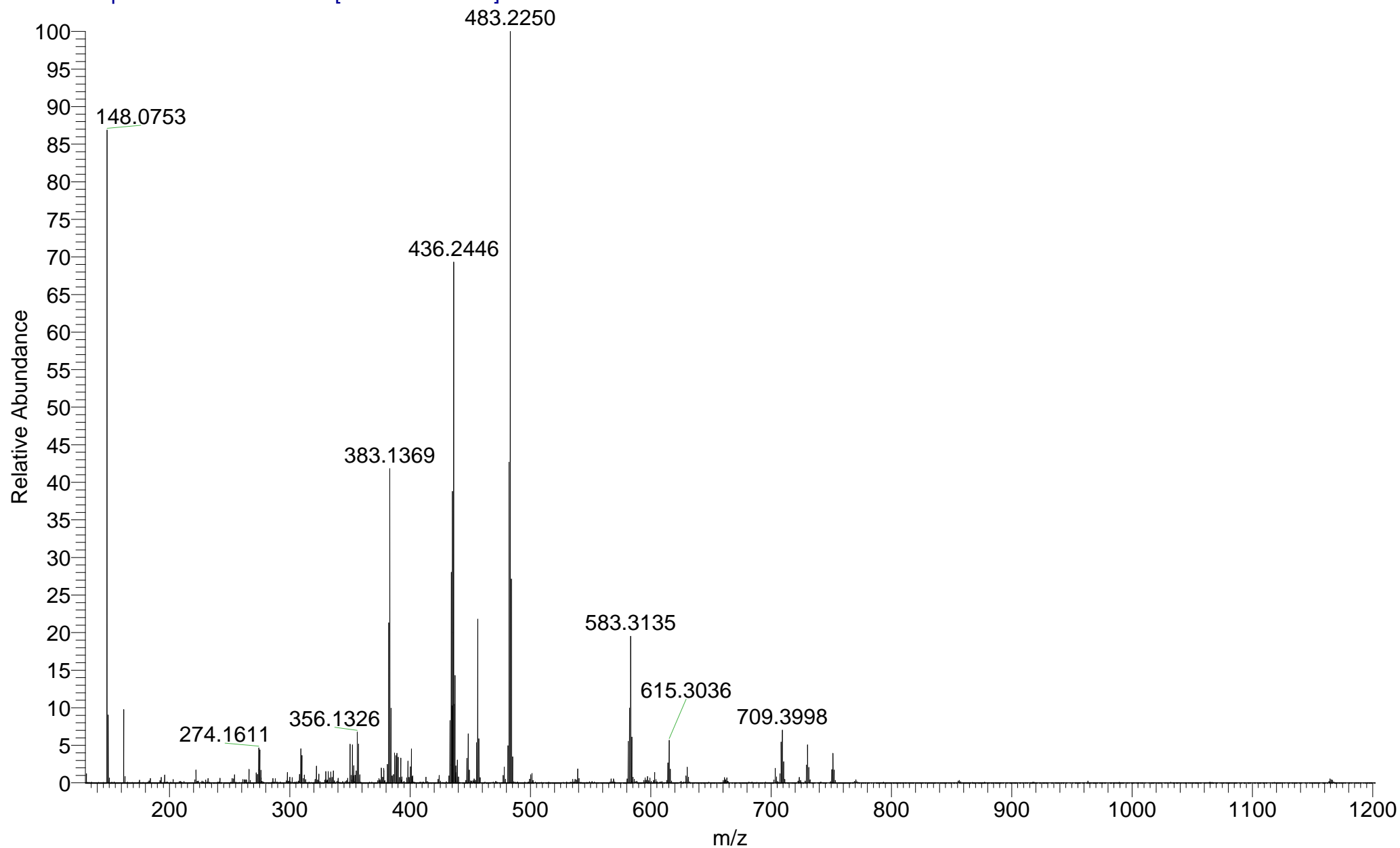
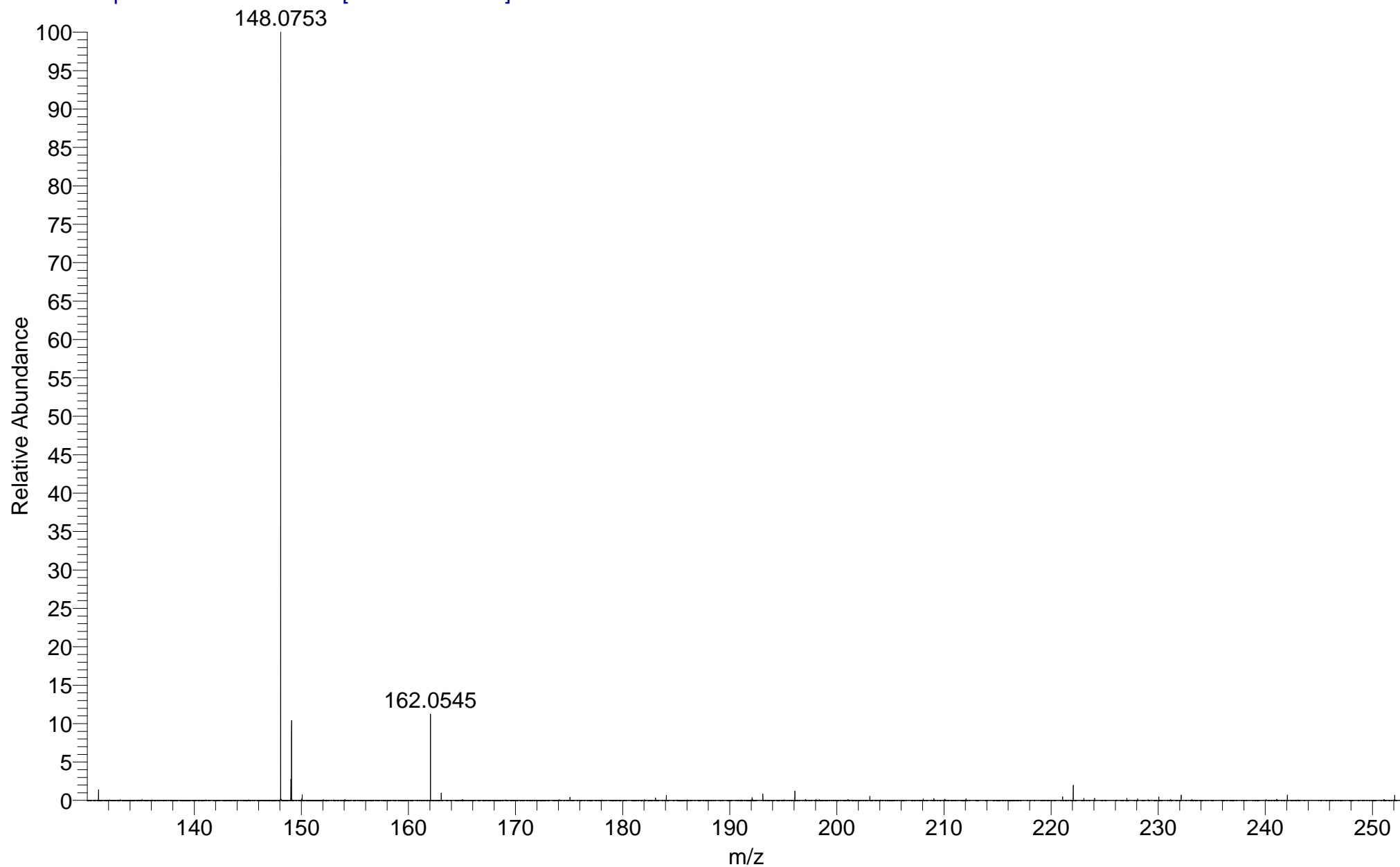


BATJAM_LTN9L_A_OJ #65-79 RT: 4.16-4.93 AV: 15 NL: 3.16E7
T: FTMS + p APCI corona Full ms [130.00-1200.00]

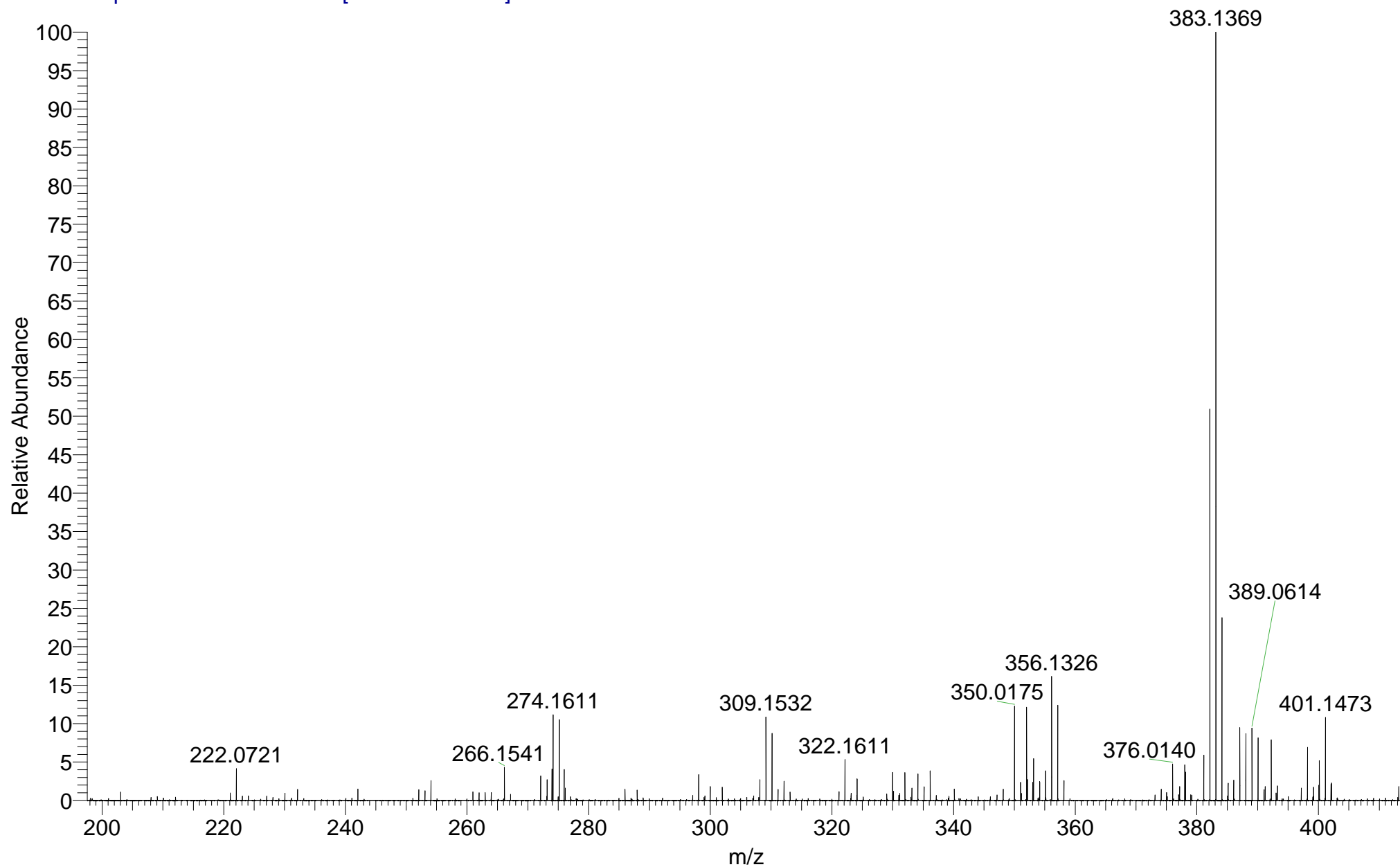


BATJAM_LTN9L_A_OJ #65-79 RT: 4.16-4.93 AV: 15 NL: 2.74E7

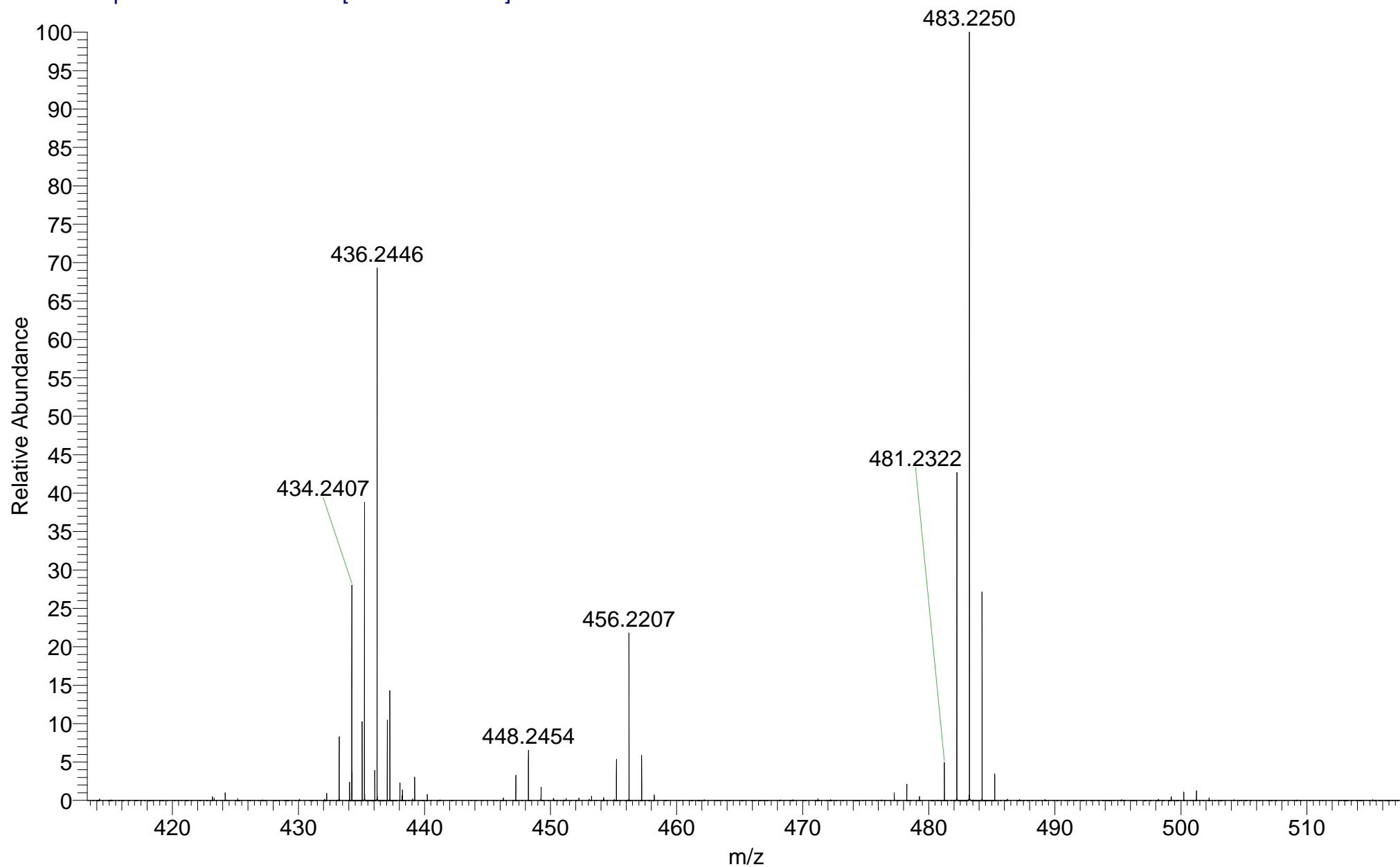
T: FTMS + p APCI corona Full ms [130.00-1200.00]



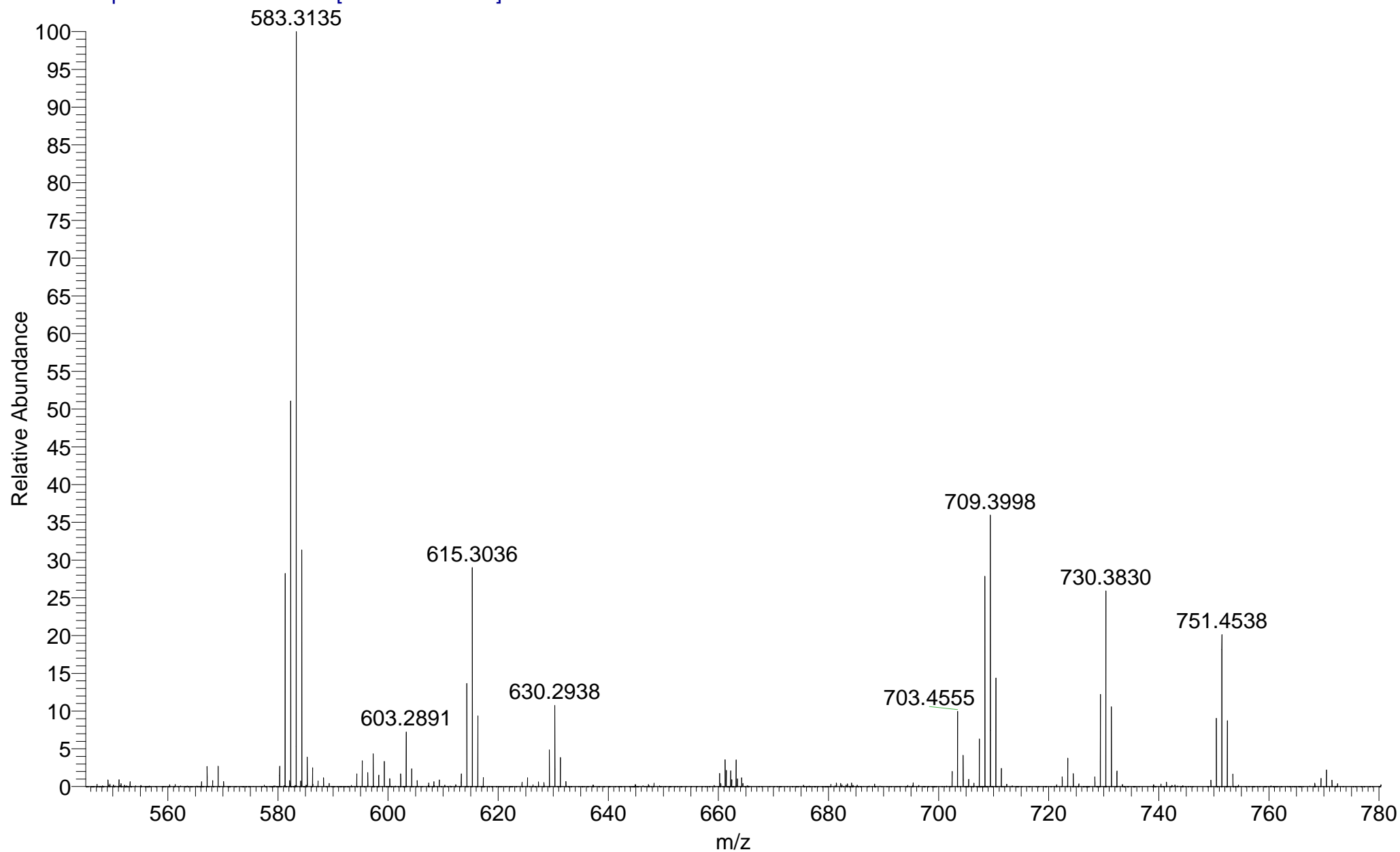
BATJAM_LTN9L_A_OJ #65-79 RT: 4.16-4.93 AV: 15 NL: 1.32E7
T: FTMS + p APCI corona Full ms [130.00-1200.00]

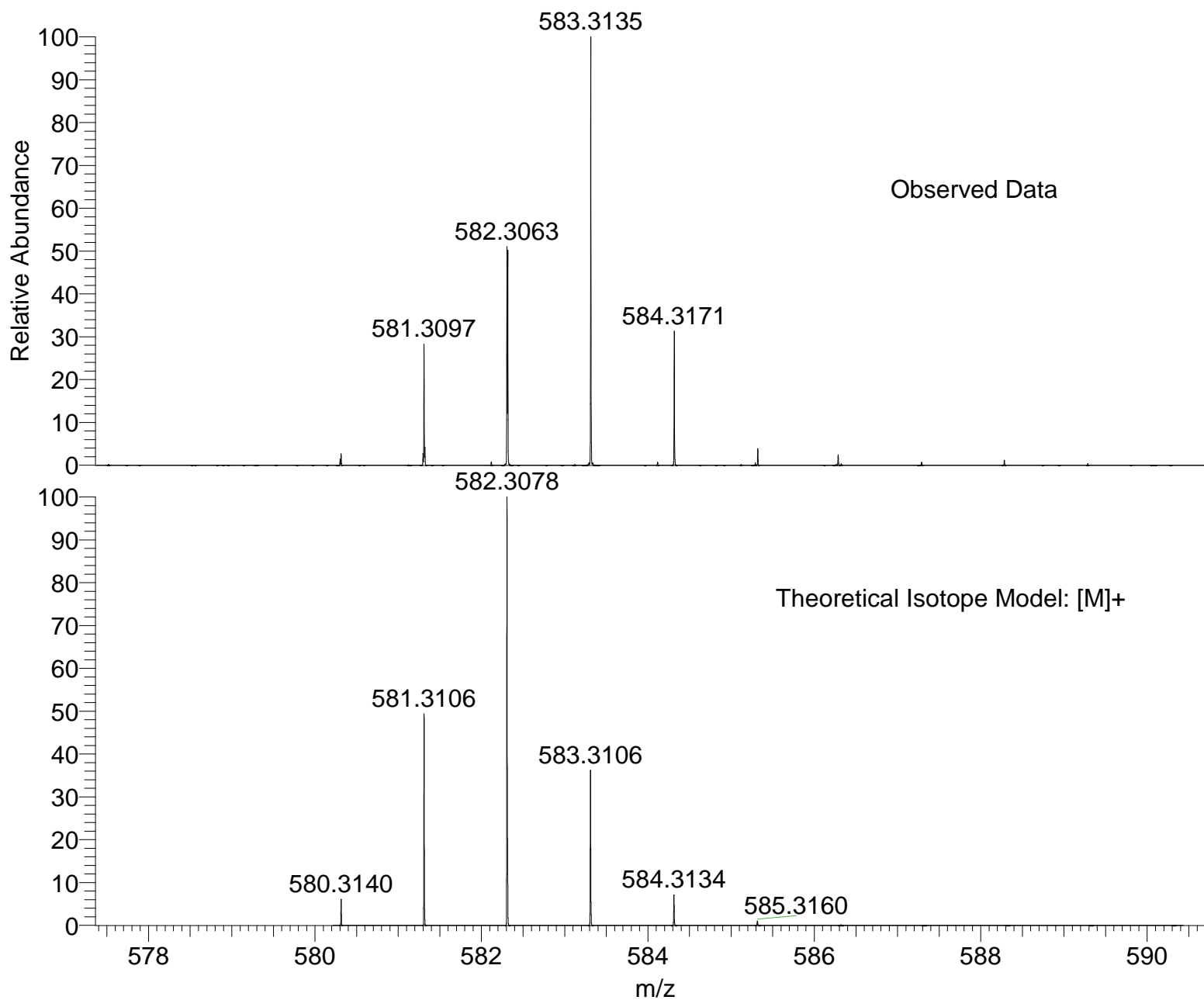


BATJAM_LTN9L_A_OJ #65-79 RT: 4.16-4.93 AV: 15 NL: 3.16E7
T: FTMS + p APCI corona Full ms [130.00-1200.00]



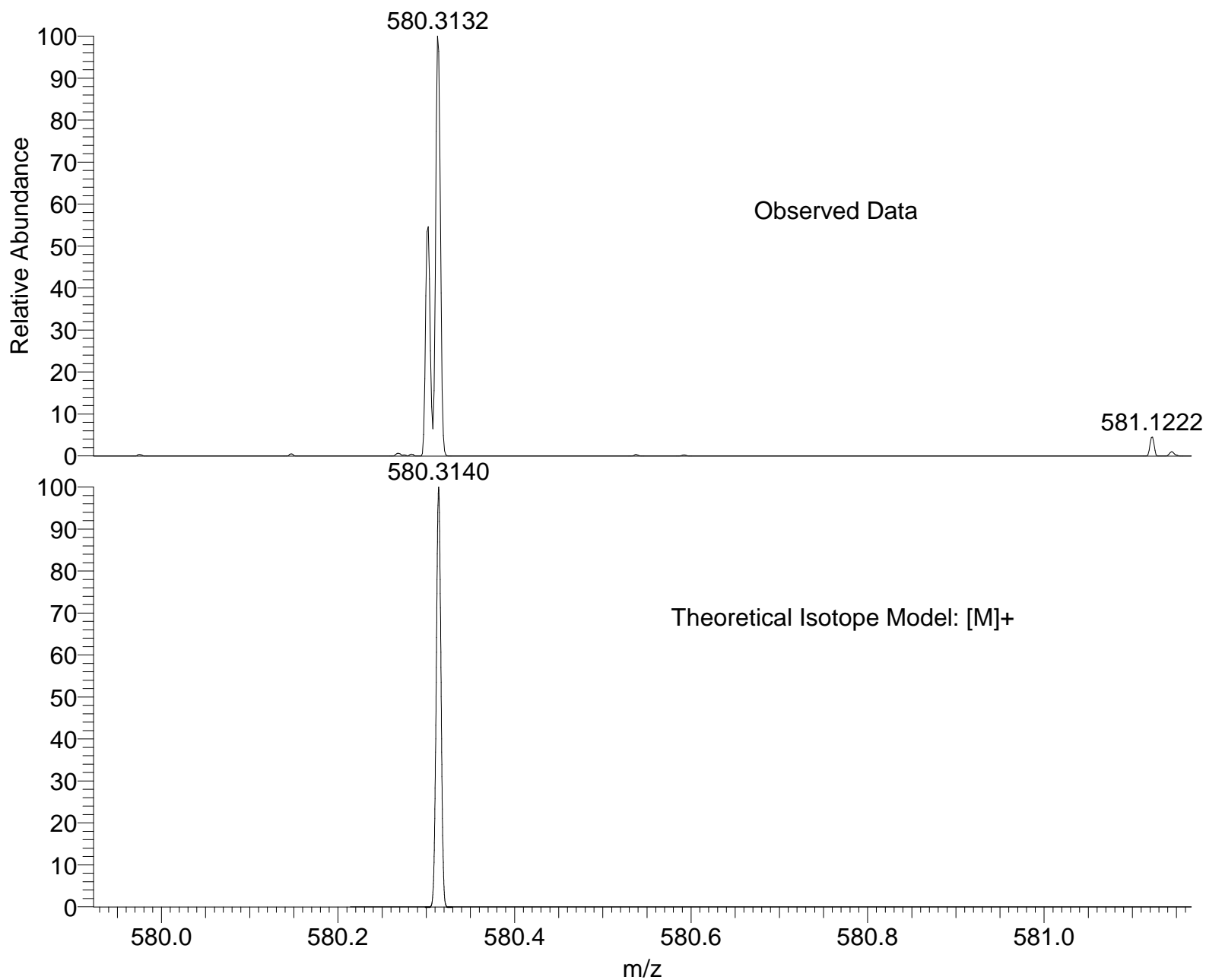
BATJAM_LTN9L_A_OJ #65-79 RT: 4.16-4.93 AV: 15 NL: 6.16E6
T: FTMS + p APCI corona Full ms [130.00-1200.00]





NL:
6.16E6
BATJAM_LTN9L_A_OJ#65-79
RT: 4.16-4.93 AV: 15 T: FTMS
+ p APCI corona Full ms
[130.00-1200.00]

NL:
1.03E4
C₃₃ H₄₀ B₂ N₂ O₆:
C₃₃ H₄₀ B₂ N₂ O₆
p (gss, s /p:40) Chrg 1
R: 100000 Res .Pwr . @FWHM



NL:
1.67E5
BATJAM_LTN9L_A_OJ#65-79
RT: 4.16-4.93 AV: 15 T: FTMS
+ p APCI corona Full ms
[130.00-1200.00]

NL:
6.34E2
C₃₃H₄₀B₂N₂O₆:
C₃₃H₄₀B₂N₂O₆
p (gss, s /p:40) Chrg 1
R: 100000 Res .Pwr . @FWHM

Isotope: Min. .. Max.
 14 N 0....15
 16 O 0....15
 12 C 0....70
 1 H 0....80
 23 Na 0....0
 10 B 0....2
 Tolerance Window: +- 10.00 ppm
 Db/Ring Equiv: -3.. 100
 Fits: 100

N-Rule: Do not use
 Charge: 1

Mass	Theoretical Mass	Delta [ppm]	RDB	Composition
580.3132	580.3132	-0.0	20.5	C ₃₉ H ₄₀ O ₃ N ₁ ¹⁰ B ₁
	580.3131	0.1	3.0	C ₁₇ H ₄₀ O ₁₁ N ₁₀ ¹⁰ B ₂
	580.3130	0.4	13.5	C ₃₁ H ₄₂ O ₆ N ₅
	580.3130	0.4	19.0	C ₃₀ H ₃₆ O ₁ N ₁₂
	580.3135	-0.5	1.0	C ₁₇ H ₄₄ O ₁₂ N ₁₀
	580.3137	-0.9	13.5	C ₂₄ H ₃₆ O ₄ N ₁₃ ¹⁰ B ₁
	580.3137	-0.9	8.0	C ₂₅ H ₄₂ O ₉ N ₆ ¹⁰ B ₁
	580.3126	1.0	15.5	C ₃₁ H ₃₈ O ₅ N ₅ ¹⁰ B ₂
	580.3126	1.0	21.0	C ₃₀ H ₃₂ N ₁₂ ¹⁰ B ₂
	580.3125	1.3	26.0	C ₄₅ H ₄₀
	580.3140	-1.3	20.5	C ₃₂ H ₃₄ O ₁ N ₉ ¹⁰ B ₂
	580.3140	-1.3	15.0	C ₃₃ H ₄₀ O ₆ N ₂ ¹⁰ B ₂
	580.3124	1.4	3.0	C ₂₄ H ₄₆ O ₁₃ N ₂ ¹⁰ B ₁
	580.3124	1.4	8.5	C ₂₃ H ₄₀ O ₈ N ₉ ¹⁰ B ₁
	580.3121	1.9	1.5	C ₁₅ H ₄₂ O ₁₁ N ₁₃
	580.3143	-1.9	18.5	C ₃₂ H ₃₈ O ₂ N ₉
	580.3143	-1.9	13.0	C ₃₃ H ₄₄ O ₇ N ₂
	580.3145	-2.2	8.0	C ₁₈ H ₃₆ O ₇ N ₁₄ ¹⁰ B ₂
	580.3145	-2.2	2.5	C ₁₉ H ₄₂ O ₁₂ N ₇ ¹⁰ B ₂
	580.3119	2.3	21.0	C ₃₇ H ₃₈ O ₂ N ₄ ¹⁰ B ₁
	580.3118	2.4	-2.0	C ₁₆ H ₄₄ O ₁₅ N ₆ ¹⁰ B ₂
	580.3118	2.4	3.5	C ₁₅ H ₃₈ O ₁₀ N ₁₃ ¹⁰ B ₂
	580.3116	2.7	8.5	C ₃₀ H ₄₆ O ₁₀ N ₁
	580.3116	2.7	14.0	C ₂₉ H ₄₀ O ₅ N ₈
	580.3116	2.7	19.5	C ₂₈ H ₃₄ N ₁₅
	580.3148	-2.8	6.0	C ₁₈ H ₄₀ O ₈ N ₁₄
	580.3148	-2.8	0.5	C ₁₉ H ₄₆ O ₁₃ N ₇
	580.3151	-3.2	13.0	C ₂₆ H ₃₈ O ₅ N ₁₀ ¹⁰ B ₁
	580.3151	-3.2	7.5	C ₂₇ H ₄₄ O ₁₀ N ₃ ¹⁰ B ₁
	580.3113	3.3	10.5	C ₃₀ H ₄₂ O ₉ N ₁ ¹⁰ B ₂
	580.3113	3.3	16.0	C ₂₉ H ₃₆ O ₄ N ₈ ¹⁰ B ₂

Mass	Theoretical Mass	Delta [ppm]	RDB	Composition
580.3153	580.3153	-3.6	20.0	C ₃₄ H ₃₆ O ₂ N ₆ ¹⁰ B ₂
580.3110	580.3110	3.7	3.5	C ₂₂ H ₄₄ O ₁₂ N ₅ ¹⁰ B ₁
580.3110	580.3110	3.7	9.0	C ₂₁ H ₃₈ O ₇ N ₁₂ ¹⁰ B ₁
580.3156	580.3156	-4.1	0.5	C ₁₂ H ₄₀ O ₁₁ N ₁₅ ¹⁰ B ₁
580.3156	580.3156	-4.2	18.0	C ₃₄ H ₄₀ O ₃ N ₆
580.3158	580.3158	-4.5	7.5	C ₂₀ H ₃₈ O ₈ N ₁₁ ¹⁰ B ₂
580.3158	580.3158	-4.5	2.0	C ₂₁ H ₄₄ O ₁₃ N ₄ ¹⁰ B ₂
580.3105	580.3105	4.6	16.0	C ₃₆ H ₄₂ O ₆ ¹⁰ B ₁
580.3105	580.3105	4.6	21.5	C ₃₅ H ₃₆ O ₁ N ₇ ¹⁰ B ₁
580.3159	580.3159	-4.6	25.0	C ₄₂ H ₃₈ N ₂ ¹⁰ B ₁
580.3104	580.3104	4.7	-1.5	C ₁₄ H ₄₂ O ₁₄ N ₉ ¹⁰ B ₂
580.3103	580.3103	5.0	9.0	C ₂₈ H ₄₄ O ₉ N ₄
580.3103	580.3103	5.0	14.5	C ₂₇ H ₃₈ O ₄ N ₁₁
580.3161	580.3161	-5.1	5.5	C ₂₀ H ₄₂ O ₉ N ₁₁
580.3162	580.3162	-5.1	0.0	C ₂₁ H ₄₈ O ₁₄ N ₄
580.3164	580.3164	-5.5	18.0	C ₂₇ H ₃₄ O ₁ N ₁₄ ¹⁰ B ₁
580.3164	580.3164	-5.5	12.5	C ₂₈ H ₄₀ O ₆ N ₇ ¹⁰ B ₁
580.3164	580.3164	-5.5	7.0	C ₂₉ H ₄₆ O ₁₁ ¹⁰ B ₁
580.3099	580.3099	5.6	11.0	C ₂₈ H ₄₀ O ₈ N ₄ ¹⁰ B ₂
580.3099	580.3099	5.6	16.5	C ₂₇ H ₃₄ O ₃ N ₁₁ ¹⁰ B ₂
580.3166	580.3166	-5.9	19.5	C ₃₆ H ₃₈ O ₃ N ₃ ¹⁰ B ₂
580.3097	580.3097	6.0	4.0	C ₂₀ H ₄₂ O ₁₁ N ₈ ¹⁰ B ₁
580.3097	580.3097	6.1	9.5	C ₁₉ H ₃₆ O ₆ N ₁₅ ¹⁰ B ₁
580.3169	580.3169	-6.4	0.0	C ₁₄ H ₄₂ O ₁₂ N ₁₂ ¹⁰ B ₁
580.3094	580.3094	6.5	-3.0	C ₁₂ H ₄₄ O ₁₄ N ₁₂
580.3170	580.3170	-6.5	17.5	C ₃₆ H ₄₂ O ₄ N ₃
580.3171	580.3171	-6.8	12.5	C ₂₁ H ₃₄ O ₄ N ₁₅ ¹⁰ B ₂
580.3172	580.3172	-6.8	7.0	C ₂₂ H ₄₀ O ₉ N ₈ ¹⁰ B ₂
580.3172	580.3172	-6.8	1.5	C ₂₃ H ₄₆ O ₁₄ N ₁ ¹⁰ B ₂
580.3092	580.3092	6.9	16.5	C ₃₄ H ₄₀ O ₅ N ₃ ¹⁰ B ₁
580.3092	580.3092	6.9	22.0	C ₃₃ H ₃₄ N ₁₀ ¹⁰ B ₁
580.3091	580.3091	7.1	-1.0	C ₁₂ H ₄₀ O ₁₃ N ₁₂ ¹⁰ B ₂
580.3089	580.3089	7.3	4.0	C ₂₇ H ₄₈ O ₁₃
580.3089	580.3089	7.3	9.5	C ₂₆ H ₄₂ O ₈ N ₇
580.3089	580.3089	7.4	15.0	C ₂₅ H ₃₆ O ₃ N ₁₄
580.3175	580.3175	-7.4	10.5	C ₂₁ H ₃₈ O ₅ N ₁₅
580.3175	580.3175	-7.4	5.0	C ₂₂ H ₄₄ O ₁₀ N ₈
580.3175	580.3175	-7.4	-0.5	C ₂₃ H ₅₀ O ₁₅ N ₁
580.3177	580.3177	-7.8	17.5	C ₂₉ H ₃₆ O ₂ N ₁₁ ¹⁰ B ₁
580.3177	580.3177	-7.8	12.0	C ₃₀ H ₄₂ O ₇ N ₄ ¹⁰ B ₁
580.3086	580.3086	7.9	6.0	C ₂₇ H ₄₄ O ₁₂ ¹⁰ B ₂
580.3086	580.3086	7.9	11.5	C ₂₆ H ₃₈ O ₇ N ₇ ¹⁰ B ₂
580.3086	580.3086	7.9	17.0	C ₂₅ H ₃₂ O ₂ N ₁₄ ¹⁰ B ₂

Mass	Theoretical Mass	Delta [ppm]	RDB	Composition
	580.3084	8.2	22.0	C ₄₀ H ₄₀ O ₂ N ₂
	580.3180	-8.2	19.0	C ₃₈ H ₄₀ O ₄ ¹⁰ B ₂
	580.3084	8.3	-1.0	C ₁₉ H ₄₆ O ₁₅ N ₄ ¹⁰ B ₁
	580.3083	8.4	4.5	C ₁₈ H ₄₀ O ₁₀ N ₁₁ ¹⁰ B ₁
	580.3182	-8.7	-0.5	C ₁₆ H ₄₄ O ₁₃ N ₉ ¹⁰ B ₁
	580.3081	8.8	-2.5	C ₁₀ H ₄₂ O ₁₃ N ₁₅
	580.3081	8.8	24.0	C ₄₀ H ₃₆ O ₁ N ₂ ¹⁰ B ₂
	580.3183	-8.8	22.5	C ₃₇ H ₃₈ N ₇
	580.3183	-8.8	17.0	C ₃₈ H ₄₄ O ₅
	580.3185	-9.1	12.0	C ₂₃ H ₃₆ O ₅ N ₁₂ ¹⁰ B ₂
	580.3185	-9.1	6.5	C ₂₄ H ₄₂ O ₁₀ N ₅ ¹⁰ B ₂
	580.3078	9.2	17.0	C ₃₂ H ₃₈ O ₄ N ₆ ¹⁰ B ₁
	580.3078	9.4	-0.5	C ₁₀ H ₃₈ O ₁₂ N ₁₅ ¹⁰ B ₂
	580.3076	9.6	4.5	C ₂₅ H ₄₆ O ₁₂ N ₃
	580.3076	9.7	10.0	C ₂₄ H ₄₀ O ₇ N ₁₀
	580.3188	-9.7	10.0	C ₂₃ H ₄₀ O ₆ N ₁₂
	580.3188	-9.7	4.5	C ₂₄ H ₄₆ O ₁₁ N ₅